

Hopkins County Schools Redistricting Plan



Hopkins County Board of Education Revised Attendance Zones

- The new attendance zones were approved by the Hopkins County Board of Education on November 21, 2022.
- Reasons for updating the attendance zones:
 - Ensure school enrollment is closer to building capacities across the district;
 - Provide a new school home for Earlington Elementary students;
 - Make the most efficient use of facilities;
 - Leave room for future enrollment growth in our schools.

Declining Population and Enrollment

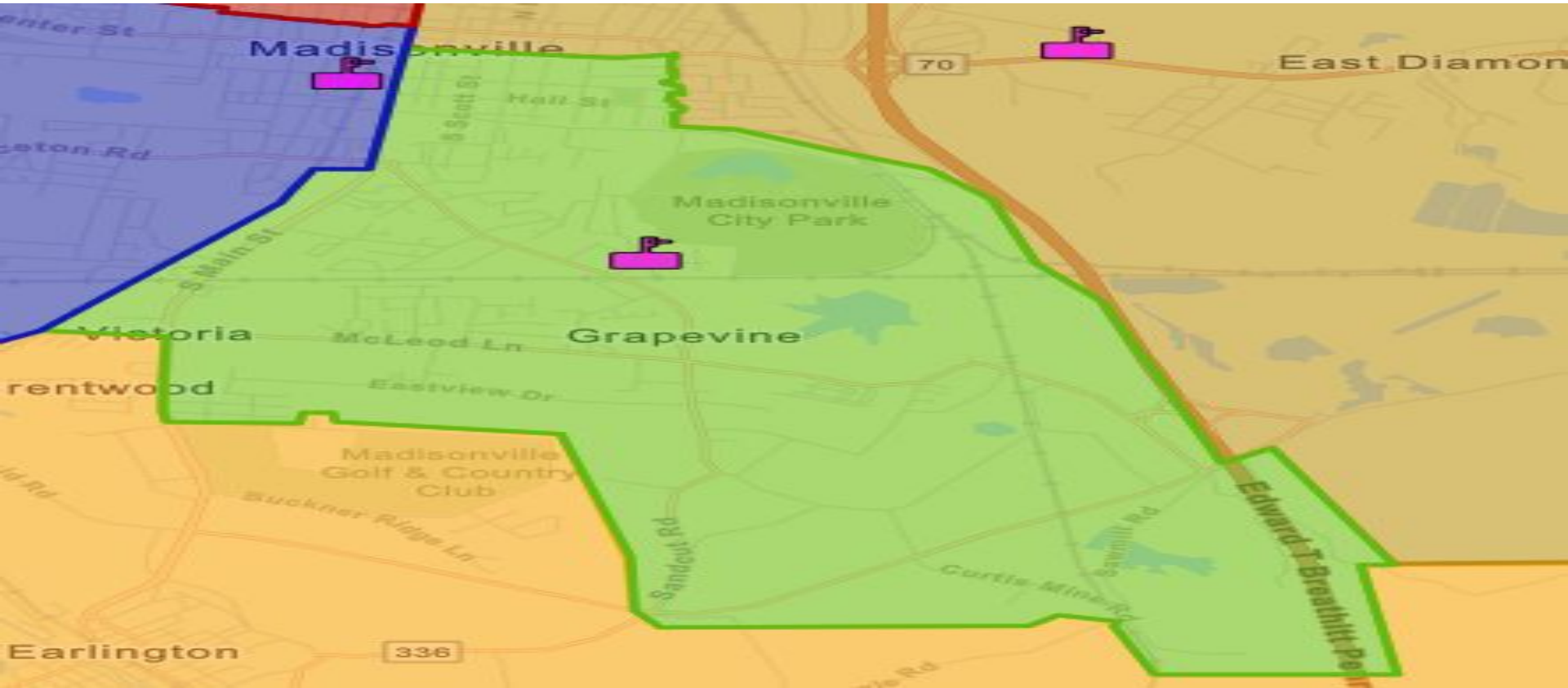
- According to the United States Census, the population of Hopkins County has declined by 3% since the 2010 census.
- The Kentucky State Data Center from the University of Louisville estimates the population of Hopkins County to continue to decline by 4% over the next 10 years.
- The Kentucky State Data Center also estimates the population of Hopkins County to decline by 10% over the next 20 years.
- Hopkins County Schools has experienced a 9% decline in enrollment since the 2015-2016 school year.

Kentucky State Data Center Projections

Hopkins County

	Population Projections							
	2010	2020	2025	2030	2035	2040	2045	2050
Total Population	46,920	45,423	44,280	43,025	41,669	40,250	38,874	37,571
Population in Households	45,834	44,425	43,245	41,982	40,618	39,191	37,807	36,496
Population in Group Quarters	1,086	998	1,035	1,043	1,051	1,059	1,067	1,075
Households	18,980	18,595	18,353	17,909	17,417	16,792	16,175	15,572
Mean Household Size	2.41	2.39	2.36	2.34	2.33	2.33	2.34	2.34

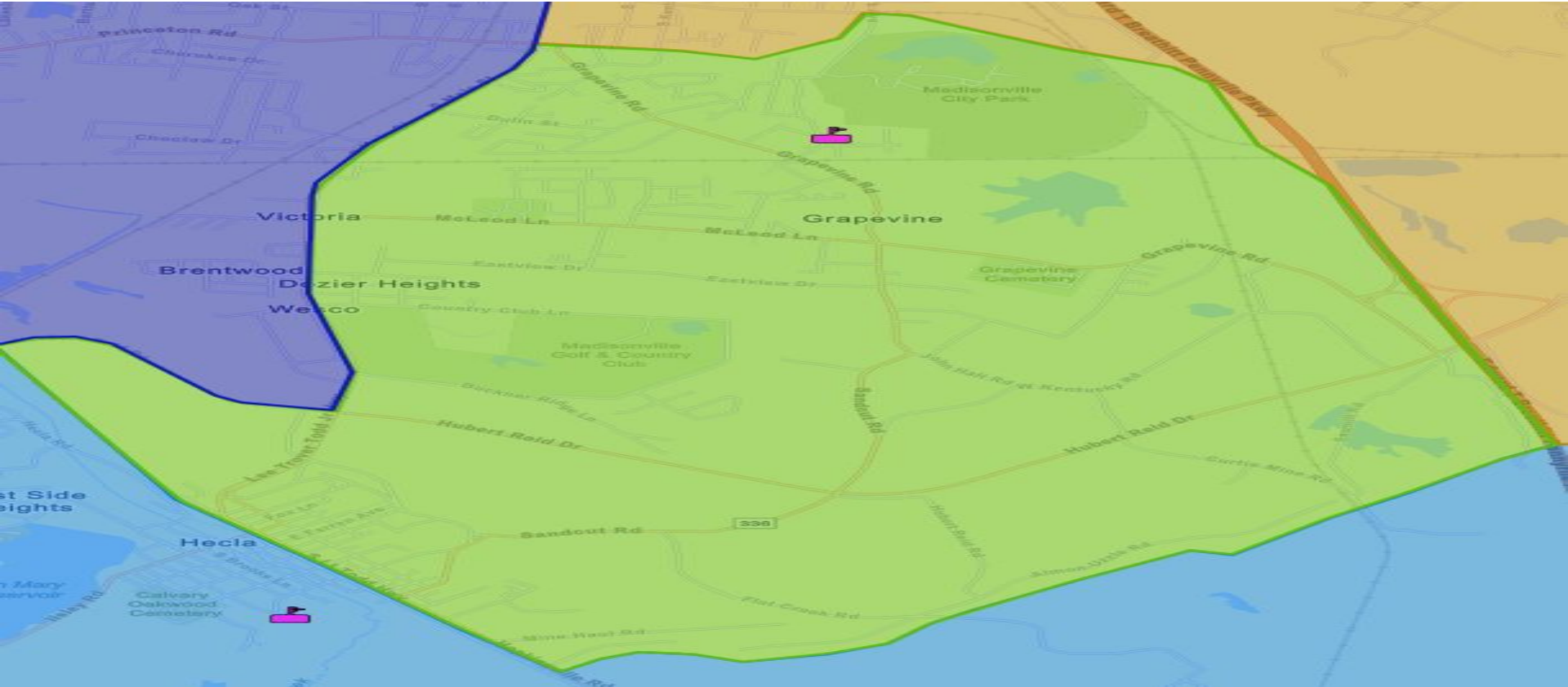
Current Grapevine Elementary Attendance Zone



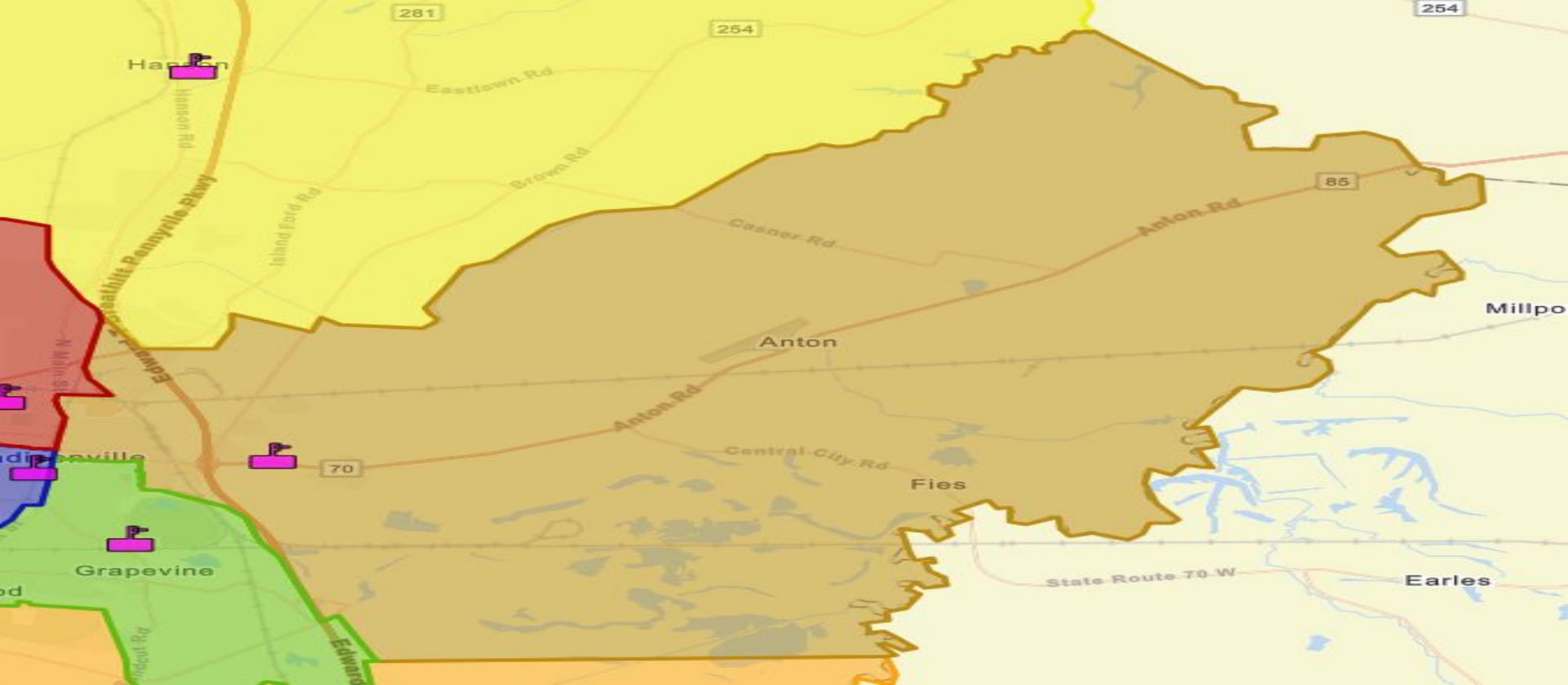
Changes to Grapevine Elementary Attendance Zone

- Students living on the East side of HWY 41 and North of Almon-Uzzle Road will attend Grapevine Elementary.
- Those students living North of East McLaughlin will now attend Jesse Stuart Elementary.

Grapevine Elementary 2023-2024 Attendance Zone



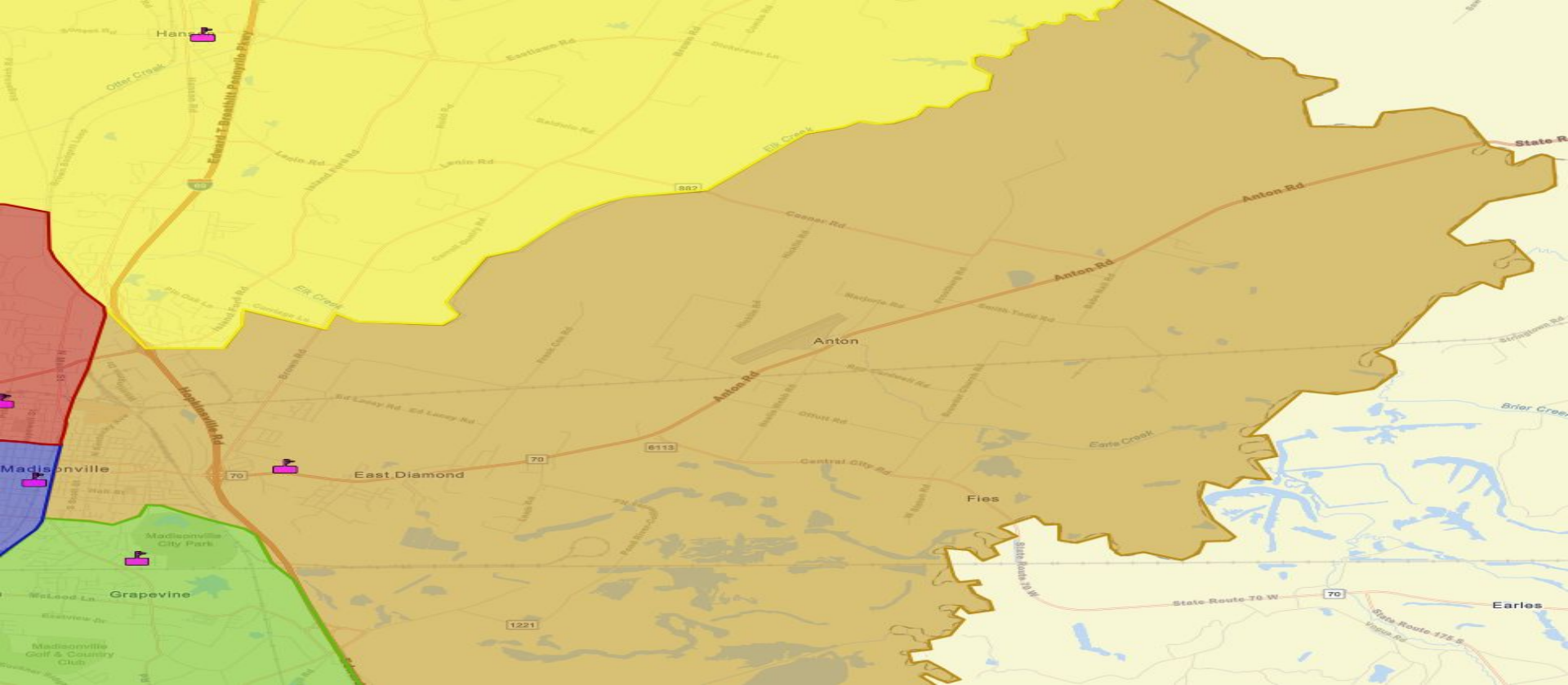
Current Jesse Stuart Elementary Attendance Zone



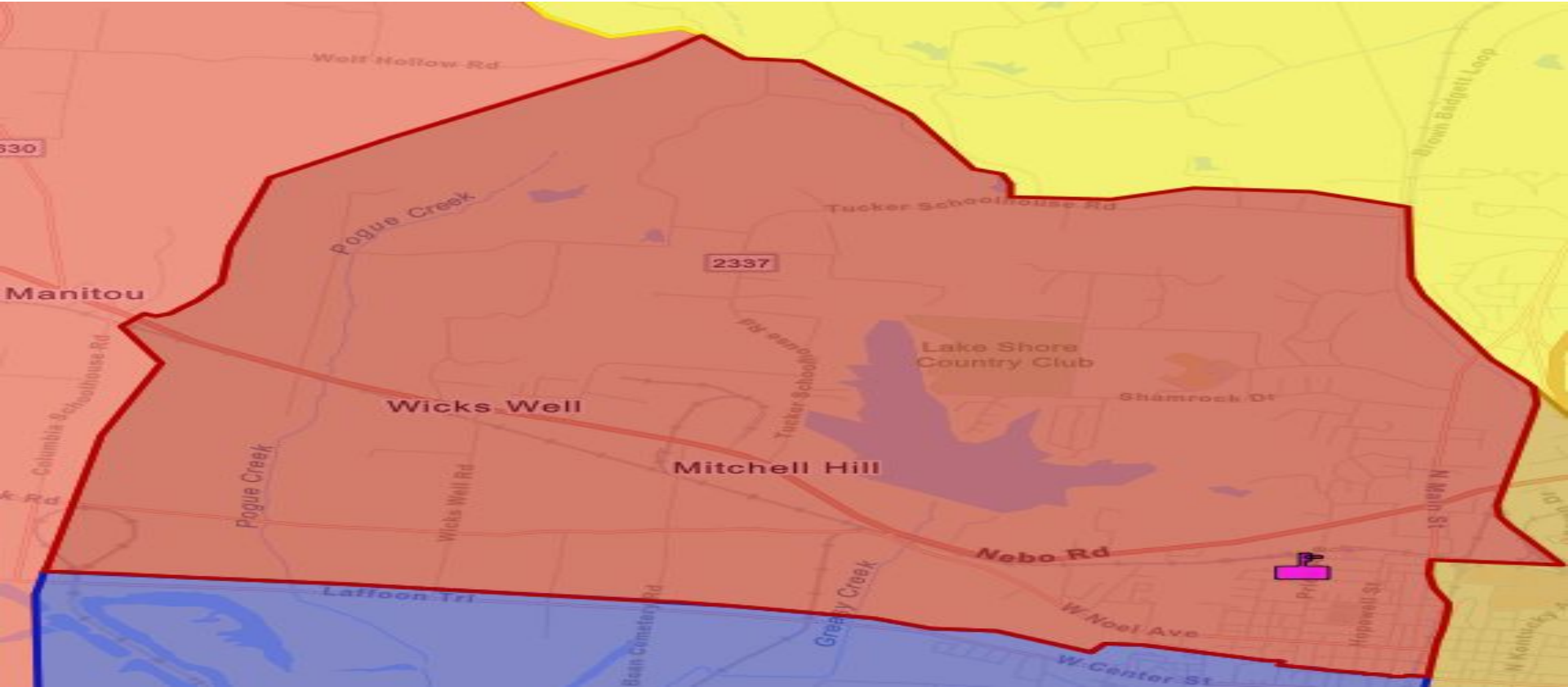
Changes to Jesse Stuart Elementary Attendance Zone

- Jesse Stuart Elementary will see an increase in enrollment as the school attendance zone will encompass a larger area.
- The southern boundary will now be East McLaughlin Avenue.

Jesse Stuart Elementary 2023-2024 Attendance Zone



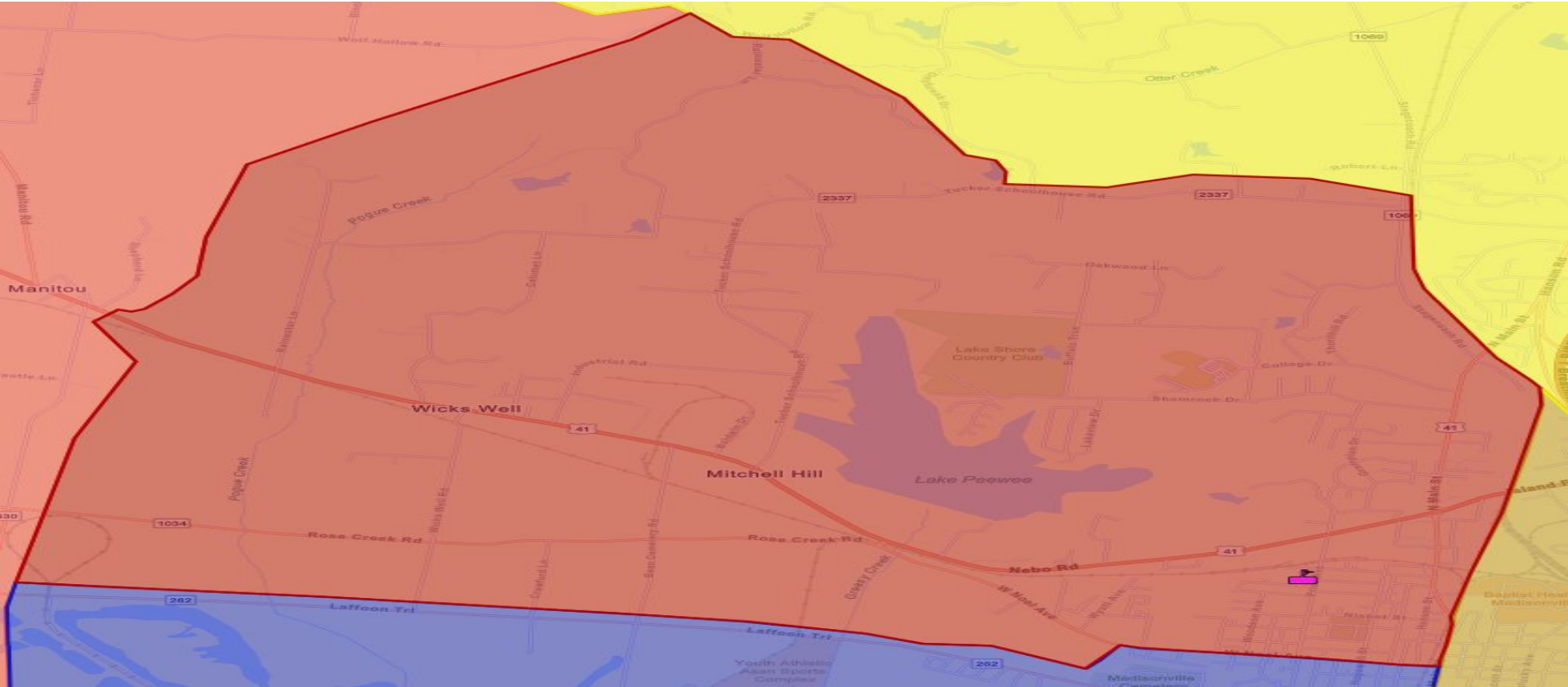
Current Pride Elementary Attendance Zone



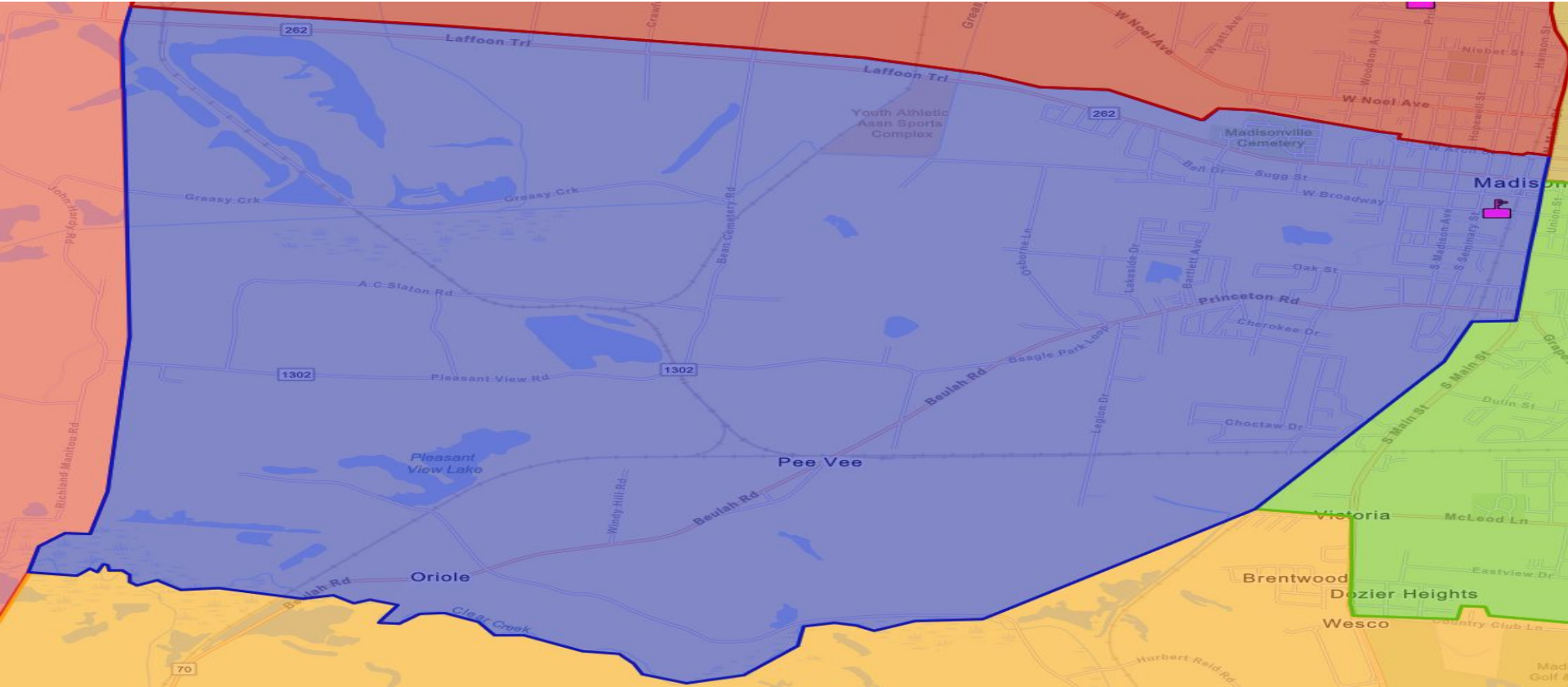
Changes to Pride Elementary Attendance Zone

- The school attendance zone boundary between Pride Elementary and West Broadway Elementary will now be moved to West Noel Avenue.
- Students living South of West Noel Avenue will attend West Broadway Elementary.

Pride Elementary 2023-2024 Attendance Zone



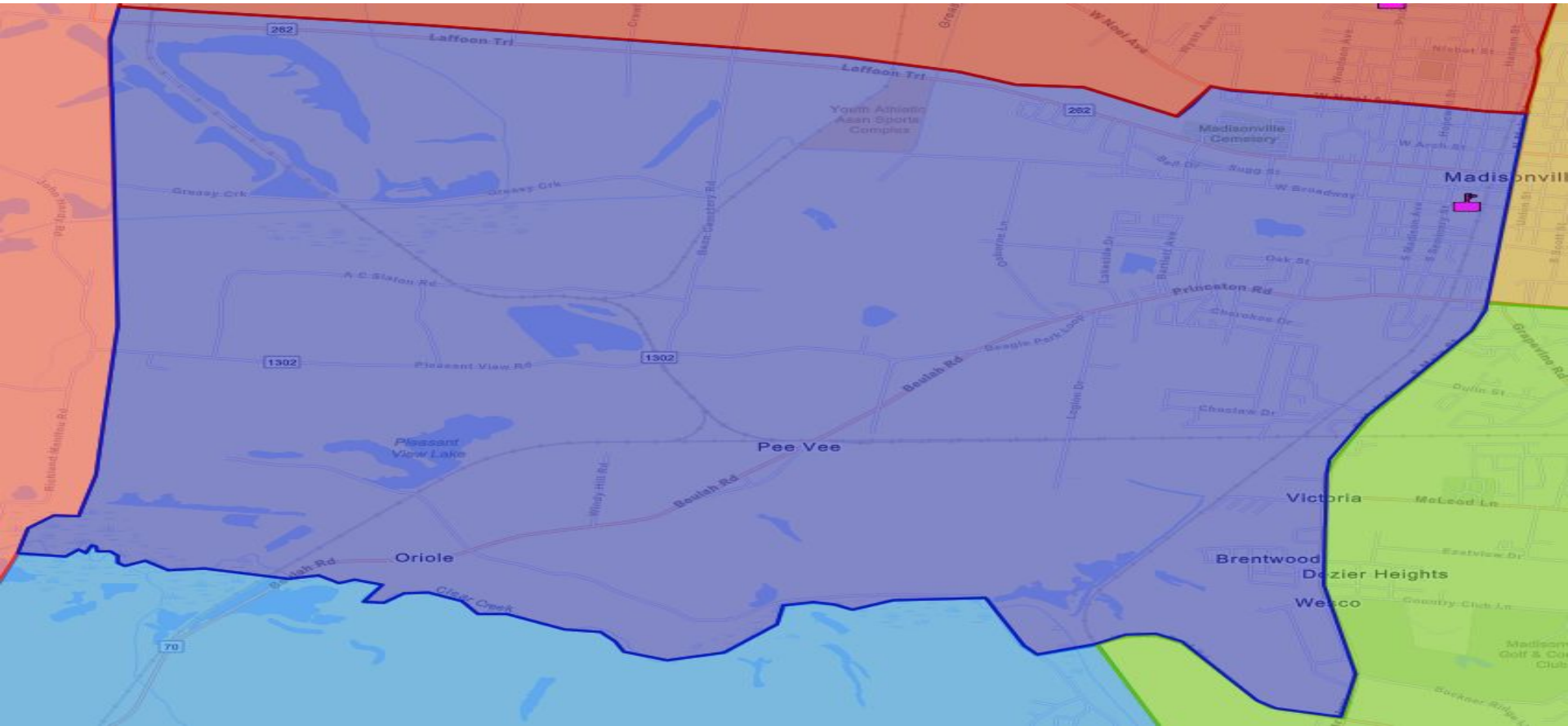
Current West Broadway Elementary Attendance Zone



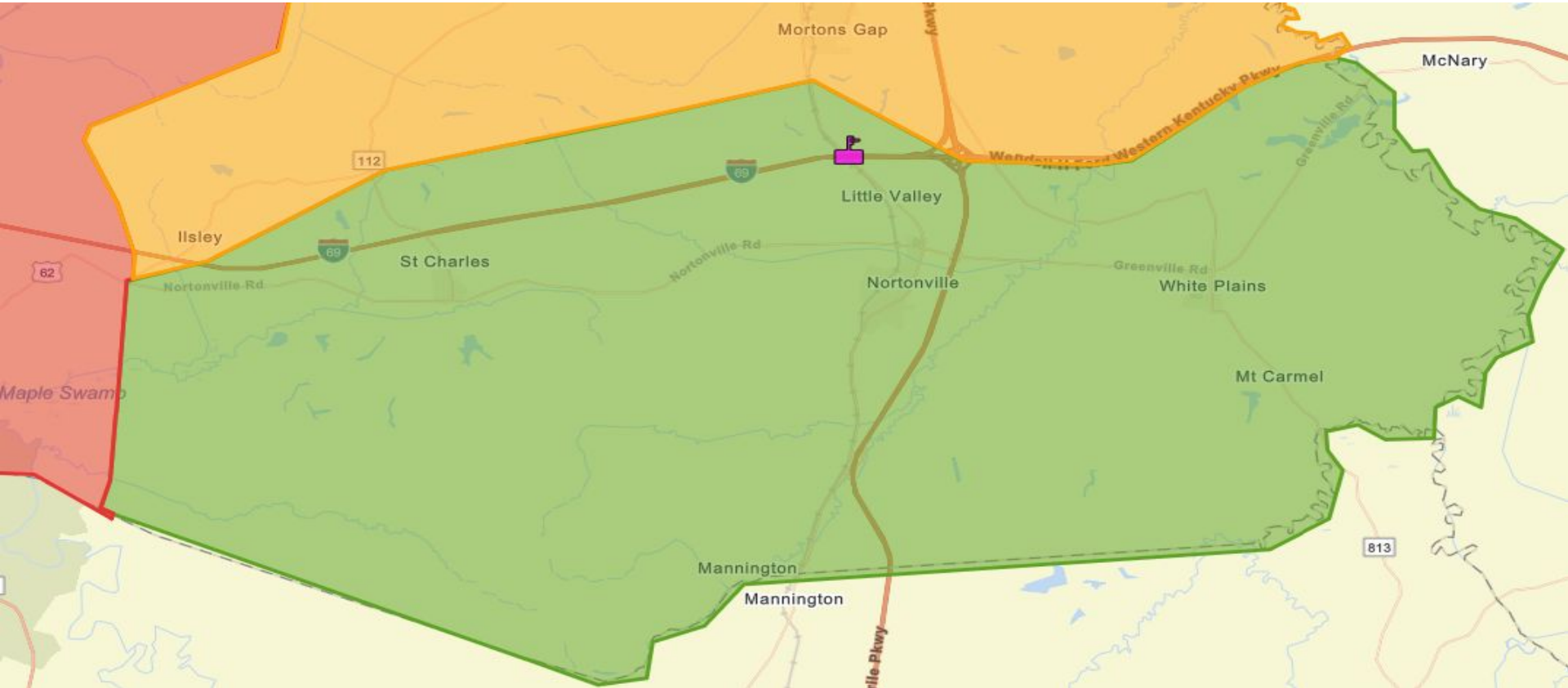
Changes to West Broadway Elementary Attendance Zone

- The school attendance zone boundary between Pride Elementary and West Broadway Elementary will now be moved to West Noel Avenue.
- Students living South of West Noel Avenue will attend West Broadway Elementary.
- Students who live on the West side of South Main Street and North of Hubert Reid Road will now attend West Broadway Elementary.

West Broadway Elementary 2023-2024 Attendance Zone



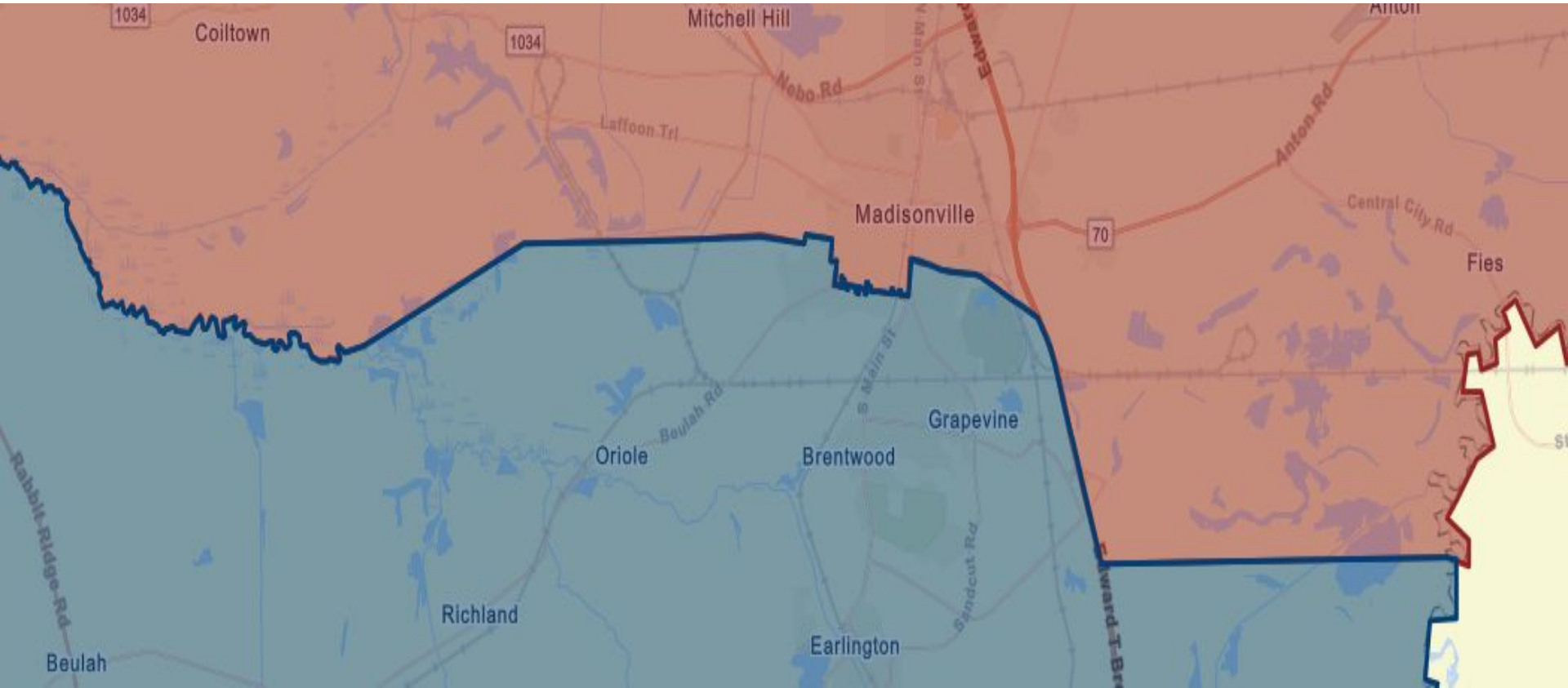
Current Southside Elementary Attendance Zone



Changes to Southside Elementary Attendance Zone

- Students residing on the West side of HWY 41 in Earlington will now attend Southside Elementary.

Current High School Attendance Zone



Changes to High School Attendance Zone

- The high school boundaries will now be moved to Center Street and Anton Road.
- This increases the boundary for the Hopkins County Central attendance zone.

High School Attendance Zone Changes 2023-2024

